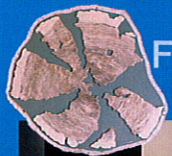


## Greetings

Hanamaki, located in the bosom of central Iwate's fertile plains, has been the site of human settlement since Paleolithic times. The current city of Hanamaki flourished under the hand of Kita Shosai (1523-1613). Shosai stewarded Hanamaki's castle, which served as a southern stronghold for the Nambu clan, around the turn of the sixteenth century. The Hanamaki City Museum displays historical and cultural materials from the Hanamaki area. The permanent *Archeology* and *History* exhibitions are supplemented by temporary exhibitions in the fields of fine arts and craft. All are presented in an easily understandable visual format. The museum also holds various workshops and experiential classes to further its goal of becoming a fun, educational, and participatory facility for all. So come and experience the culture and history that nurtured the extraordinary sensibility of such illustrious figures as Renaissance man Miyazawa Kenji.



Slip back in time 1.4 million years  
**Footprint Fossil Area**

1F  
Garden

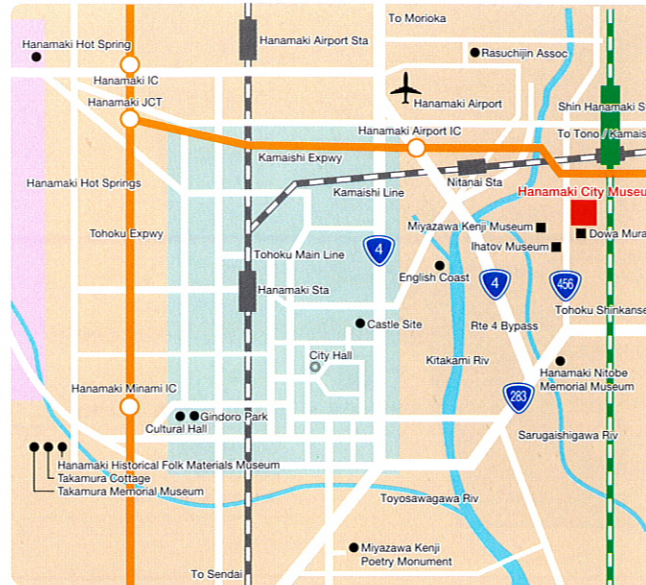
Footprint replica



During construction, eleven footprints of a primitive elephant species (*Stegodon aurora Matsumoto*) were found on these grounds. Here in the Fossil Footprint Area, replicated footprint and geological strata specimens are displayed along with landscape dioramas depicting what the elephants' life might have been like. Even though the actual footprints have been returned to the earth below the museum for eternal preservation, there is enough here to take you on a time trip back to the world of 140-million years ago.



## Information



- Access** from Shin Hanamaki Sta (Tohoku Shinkansen) 2 km (3 mins by car)
- from Hanamaki Sta (Tohoku Main Line) 8 km (15 mins by car)
- from Hanamaki IC (Tohoku Expwy) 9 km (15 mins by car)
- Hanamaki Airport IC (Kamaishi Expwy) 3 km (5 mins by car)
- Hanamaki Airport 6 km (10 mins by car)

- Hours** 8:30 - 16:30

- Closed** Dec 28 - Jan 1 (*plus closings for scheduled fumigation*)

- Admission (Permanent Collection)**

Admission	Classification	Individual	Group (20+; per person)
Hanamaki City Museum	Elem S / Jr HS	150	100
	HS / University	250	200
	Adult	350	300

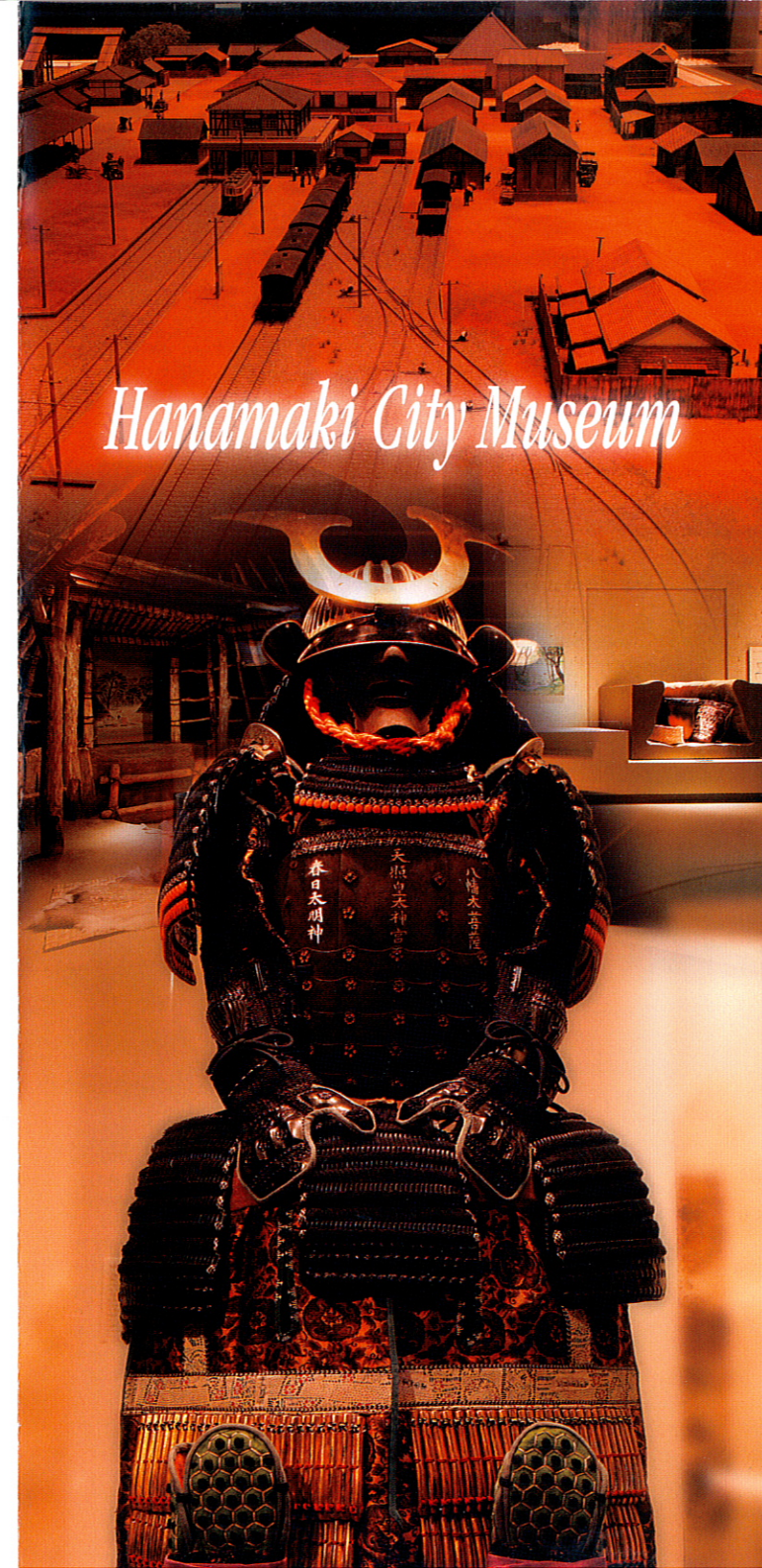
Joint Admission	Classification		Individual
	Elem S / Jr HS	HS / University	
• Hanamaki City Museum	2 facilities	200	
	3 facilities	300	
	4 facilities	400	
• Miyazawa Kenji Museum	2 facilities	350	
	3 facilities	550	
	4 facilities	650	
• Miyazawa Kenji Dowa Mura (Kenji's School)	2 facilities	550	
	3 facilities	800	
	4 facilities	1,000	
• Hanamaki Nitobe Memorial Museum	2 facilities	550	
	3 facilities	800	
	4 facilities	1,000	

\*Group discounts are not available with joint admissions



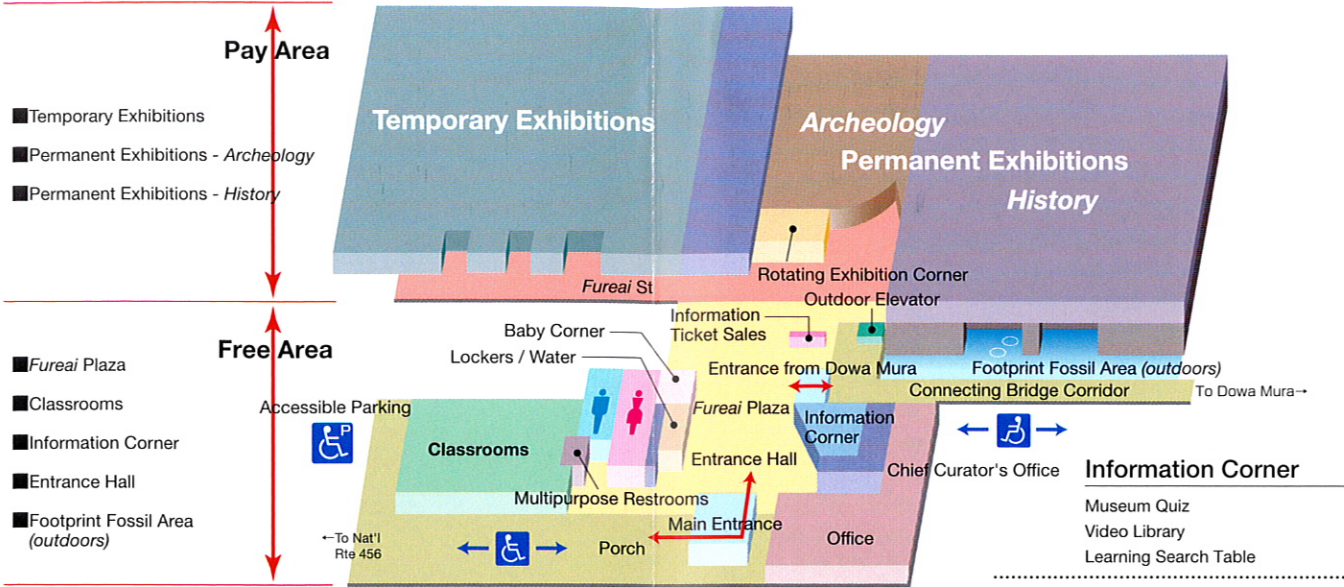
## Hanamaki City Museum

26-8-1 Takamatsu, Hanamaki, Iwate 025-0014  
(T) 0195-32-1030 (F) 0198-32-1050  
<http://museum.city.hanamaki.iwate.jp>  
museum@city.hanamaki.iwate.jp



*Hanamaki City Museum*

## Floor Map



### Fureai Plaza Entrance Hall

An opening video presentation introduces the history and culture of Hanamaki and invites you into the exhibitions. A bright, natural atmosphere is created by native Iwate red pine flooring. The adjoining bridge corridor leads to neighboring Dowa Mura.



### Classrooms

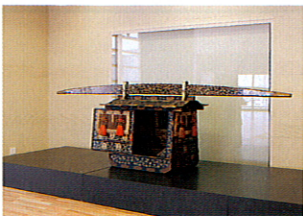
Workshops and experiential learning sessions are held in conjunction with current exhibitions. This space is multipurpose in design, and can additionally be used for movie viewing and more.

## Temporary Exhibition Area



This 600m<sup>2</sup> space hosts temporary exhibitions include not just themed exhibits but also national tours. A sliding wall makes it possible to partition this area into smaller rooms for multiple, simultaneous exhibitions

### Rotating Exhibition Corner



The Rotating Exhibition Corner displays items of particular interest from the museum collection on a rotating basis.

## Permanent Exhibition Area - Archeology



The history and lifestyle enjoyed in the Hanamaki area as far back as the Paleolithic is explained in various themes. Artifacts unearthed from the Kudenno Site and Kumado Tumuli provide insight into life in days gone by.



Life in the Jomon Era



Prayer in the Jomon Era



Cultures of the North and South

### Exhibitions

The Forests of Jomon / Life in the Jomon Era / Prayer in the Jomon Era / Cultures of the North and South / The Creation of Counties and a New Culture

## Permanent Exhibition Area - History



The history of Hanamaki from Japan's medieval period into the first half of the last century is on display here. The central zone sheds light on the warrior culture of men like Kita Shosai, father of current Hanamaki, and the larger culture of Hanamaki as a castle town. Another zone shows the Hanamaki Station area in the second quarter of the twentieth century, and even gives you a chance for a phone conversation with some of Hanamaki's eminent sons.



Hanamaki and the Nambu Clan



Life in the Castle Town



Modern Hanamaki

### Exhibitions

The Spread of Faith Among the Common People / War and Peace in Northern Tohoku / Building the City of Hanamaki / Hanamaki and the Nambu Clan / The Alternate Attendance System / Life in the Castle Town / Learning and Temple Schools in Hanamaki / Modern Hanamaki